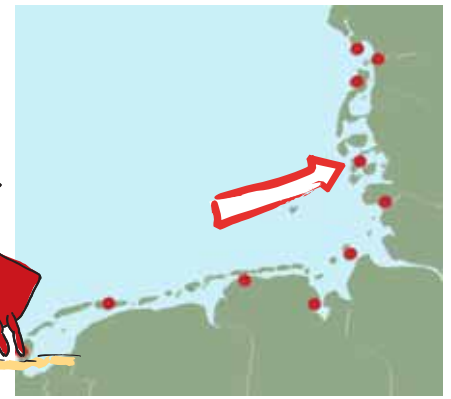
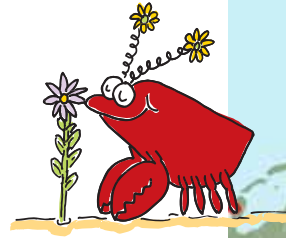


Hallig Hooge

Hallig Islands – Worldwide Unique

Fascinating culture and nature experiences between the tides



Scenery and Surroundings

The North Frisian Hallig islands are unique in the world. They are located in the middle of the National Park „Schleswig-Holsteinisches Wattenmeer“. Where the houses are built on dwelling mounts and the land is flooded several times per year, a very special culture has developed which is still alive today. Hallig Hooge is the best-known of the ten North Frisian Halligen. With its surface of 5,5 km², it offers a lot of space to discover the customs and culture of the Hallig. The surrounding Wadden Sea, one of Central Europe’s greatest nature areas, offers unique nature and wildlife experiences. Mudflat walking, boat trips and bird excursions bring the pupils in touch with the variety and dynamics of the Wadden Sea ecosystem.

The visitor centre „Wattenmeerhaus Hooge“ offers exciting views into the history of the Wadden Sea and interesting information about life on a Hallig island. Additionally, the "Wadden Sea Laboratory" invites visitors to discover and play.

Accommodation

On Hallig Hooge there are four group accommodations with 24 to 100 beds (self-catering or full board).

Getting there

By train to Husum or Bredstedt. Further by bus and ferry via Schlüttsiel harbour to Hallig Hooge. (Travel time from Hamburg ca. 4-5 hours, from Tønder ca. 4 hours).

All accommodations offer luggage transport on the Hallig. For local transportation bikes can be rented.



Crafting with seashells and/or amber in the evening.

4th day:


Am: Bird programmes "Bird Detectives" and "Wader Migration Game".
Pm: Free time or further activities on the Hallig island (visit to the local sights, Wadden Sea videos, etc.).
Farewell evening.

5th day:

Departure.

There is the possibility of visiting the colourful harbour town Husum or the *Multi-mar Wattforum* in Tönning on the way back home.

Sample Programmes

5-Day-Programme: 

1st day:

Pm: Arrival and first orientation; Evening walk over the Hallig island with legends and lighthouse quiz.

2nd day:

Am: Culture and history "expedition" and visit to the National Park visitor centre "Wattenmeerhaus Hooge".

Pm: Mudflat excursion followed by a "water laboratory"-programme with experiments and observations of typical Wadden Sea organisms.

3rd day:

Am: Boat trip with catching and identification of sea animals.

Pm: Walk over the mudflat to „Japsand“ (large sandbar about 4 km west of Hallig Hooge).

3-Day-Programme:

1st day:

Am: Arrival and first orientation.
Pm: Culture and history "expedition" and visit to the National Park visitor centre "Wattenmeerhaus Hooge".
Lighthouse quiz in the evening.

2nd day:

Am: Mudflat excursion followed by a "water laboratory"-programme with experiments and observations of typical Wadden Sea organisms.
Pm: Boat trip with catching and identification of sea animals.
Crafting with seashells and/or amber in the evening.

3rd day:

Am: Bird programmes "Bird Detectives" and "Wader Migration Game".
Pm: Departure.





Hallig Hooge - Travel Information

Accommodation

- **Wattenmeerhaus Hooge**
Hanswarft
D - 25859 Hallig Hooge

24 beds, self-catering

Booking:

Schutzstation Wattenmeer
Grafenstraße 23
D - 24768 Rendsburg

t +49 (0) 43 31 - 23 622, f - 25 246

info@schutzstation-wattenmeer.de
www.schutzstation-wattenmeer.de

- **Haus Petersen**
Okelützwarft
D - 25859 Hallig Hooge

40 beds, self-catering

Booking:

Bärbel Friedrichson

t +49 (0) 48 41 - 79 40, f - 73 531

- **Ferienhof Volkertswarft**
Leif Boyens
D - 25859 Hallig Hooge

t +49 (0) 48 49 - 90 99 60, f - 90 99 80
m +49 (0) 177 - 37 22 415

info@volkertswarft.de
www.volkertswarft.de

90 beds, self-catering or full board

- **Jugendwarft Hallig Hooge**
Jürgen and Hanna Diedrichsen
Backenswarft 1
D - 25859 Hallig Hooge

t +49 (0) 48 49 - 224, f - 264

www.jugendwarft.de

100 beds, self-catering or full board

Tip: The IWSS offers a cooking-service for all self-catering accommodations!
→ www.iwss.org

Shopping Facilities

- **Hallig-Kaufmann** (grocery)
Dieter Schiefelbein, Renate Kuhnke
Hanswarft 10
D - 25859 Hallig Hooge

t and f +49 (0) 48 49 - 290

www.halligkaufmann.de

Please order 10 days in advance.

- **Hauke Ketelsen** (milk & cream)
Hanswarft

t +49 (0) 48 49 - 302

ketelsen-hooge@t-online.de

- **Hartwig Binge** (ecological products)

t +49 (0) 48 49 - 208

www.hallighof.de

Getting there & around

• Train:

From Germany: DB-group travel service

t +49 (0) 18 05 - 99 55 11.

Timetable - & fares:

www.bahn.de

www.nordostseebahn.de (regional service)

From Denmark: DSB group travel service

t +45 70 - 13 14 15

Timetable & fares: www.dsb.dk

From The Netherlands:

Timetable & fares: www.ns.nl

Your national IWSS Focal Point can help you find the best group arrangement.
info.nl@iwss.org

- **Bus** (No 1041):

Time tables are included in DB-info.

Tickets can be purchased at the busdriver.

Information: www.scout-sh.de

Please register groups in advance:

North Frisian Traffic Service

t +49 (0) 180 - 28 45 300

Tip: Book trains & busses well in advance for best group discounts!

- **Ferry** (W.D.R.):

Time tables are included in DB-info.

Fares: www.wdr-wyk.de

- **Luggage transport:**

Please contact your accommodation for further information.

- **Bike Rental Outlet:**

Jürgen and Hanna Diedrichsen
Backenswarft 1

t +49 (0) 48 49 - 224, f - 264

info@halligurlaub.de

Programme & Activities

IWSS programme

- **Schutzstation Wattenmeer**

Wattenmeerhaus Hooge

Hanswarft

D - 25859 Hallig Hooge

t +49 (0) 48 49 - 229, - 90 99 17

hooge@schutzstation-wattenmeer.de

www.schutzstation-wattenmeer.de

Details & fees on request.

Tip: Ask the centres for an individual IWSS-programme!

Hooge Sightseeing

- **Königspesel;** Hanswarft
(opens daily)

- **"Sturmflutkino"** (storm surge video);
Hanswarft
(opens daily)

- **Museum of Local History**

Hanswarft

(01.03 - 31.10.: daily 10.00 - 16.00h)

- **"Halligkirche"** (Church); Kirchwarft
(opens daily, except Mon;
Sun a.m. church service)

Favourite Excursions

- Half-day trip to **Hallig Langeneß**

- Day-trip to **Amrum**

- Excursion to **Hallig Norderoog & to Norderoogsand** with "Schutzstation"

- **Husum** and/or **Multimar Wattforum** Tönning on the way

Further Information

- **Tourist Information Hooge**

Hanswarft 1

D - 25859 Hallig Hooge

t +49 (0) 48 49 - 91 00

www.hooge.de

- **Nature & National Park**

www.wattenmeer-nationalpark.de

www.halligen.de (de)

www.schutzstation-wattenmeer.de (de)

